

Travel responsibly - secure the future

Nature Reserve: Naukluft Ecosystem
Environmental concept: Top awards
Give & Take Excursion: Nabasib School



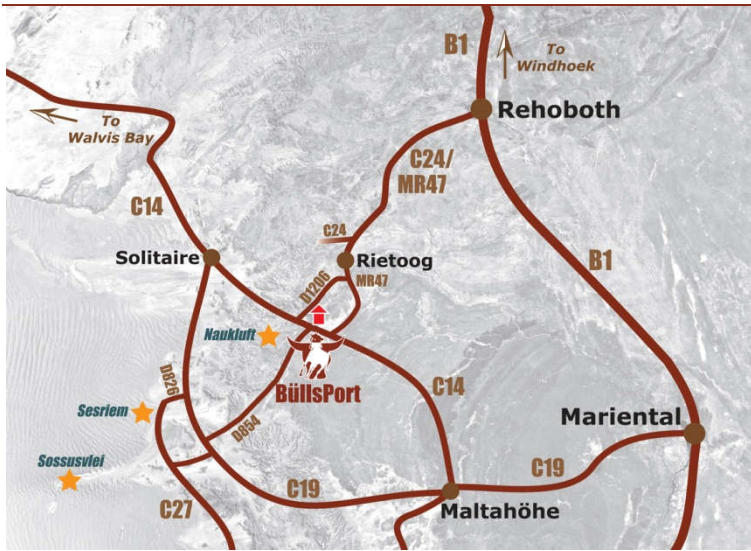
NAUKLuFT Mountains Hiking & Riding

Tel +264 63 293371
info@buelport.com
www.buelport-naukluft.com



BullsPort in a nutshell

Please note: As it is too warm for hiking and riding, BullsPort will be **closed** from **28/11/2025** to **1/02/2026**



Location

On the T-junction C 14 / D 1206

GPS S 24° 08.931' E 16° 21.773'

230 km to Windhoek

280 km to Walvis Bay

110 km to Sesriem/Sossusvlei

Accessible with a sedan, but SUVs and 4x4s are more comfortable and advantageous in Namibia

An ideal stopover, also at the **beginning** or **end** of your tour through Namibia

Mountains of the NAUKLuFT with springs as a **charming contrast** to the dune sea of the Namib

If you are coming from South Africa, this is the **ideal stopover** on the way to the Namibian coast

Lodge

family-friendly

accessible for impaired (restaurant / lounge and 6 of the rooms)

environmentally aware: top mark of the eco seal EcoAwards Namibia

socially responsible: Naukluft Foundation supports Nabasib School

12 spacious rooms (on average 45 m²):

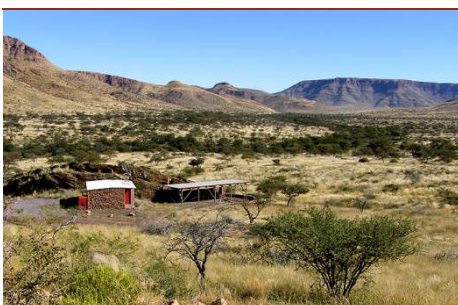
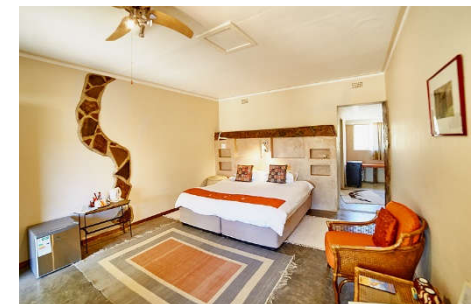
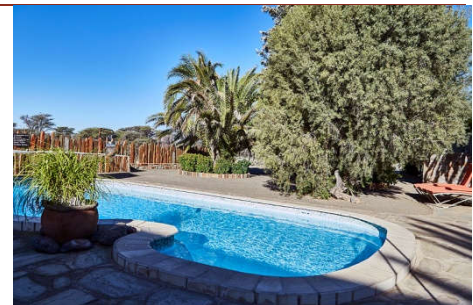
10 double rooms (twin beds) and 2 family suites (twin beds)

Each room has a **bathroom**, a **separate toilet** and a small **veranda**, **air conditioner**, ceiling fan, fly screens on the door and windows, **fridge**, coffee station and hair dryer

Restaurant, lounge, terrace, bar, **swimming pool good**, **free WiFi** in rooms and lounge; limited mobile phone reception

Hearty farm cuisine (vegetarian on request), fresh farm produce

Check-in from 2 p.m., check-out by 10 a.m.



Camping

2 Campsites in the nature reserve (3 km to the lodge) with 2 pitches each max. 4 persons per pitch or 10 persons per campsite

Camping box & gate key at check-in at lodge reception

each pitch has its **own (hot) shower/WC**, barbecue facilities and sink **Shade** under trees, no power point, no mobile reception

Brunch 10 a.m. - 12 a.m. & further meals on request at the lodge

Arrival 2 p.m. - 5 p.m., departure by 10 a.m.

Nature

Naukluft Mountains – 43 km² private nature reserve

Fascinating **geology**

Perennial springs, **creeks** & water kolks

About **50 species of mammals**, incl. the near endemic **mountain zebra**

Diverse **birdlife** (more than 200 species)

Unique **flora** incl. resurrection bush, Bushman's candle, **quiver tree** and sycamore



Hiking

Widespread **network** of 14 well-marked hiking trails, from 30 min. to 7 hours, from easy to challenging, to explore **on your own**, on request also possible with a guide

Quiver Tree Gorge Trail (fitness and surefootedness required)

F.o.c.: in the mornings, up to the plateau, back through the gorge (7 h)

Tour: in the mornings, scenic drive in game viewer up to plateau (1.5 h), unguided hike through the gorge (3 h), drive back to lodge (30 min)

Option: Nature drive to the plateau and lower gorge (5 h)

Rock arch (Bogenfels) Trail (fitness and surefootedness required)

Tour: in the afternoons, drive in the game viewer (1 h), hike to the rock arch (Bogenfels of the NAUKLuFT; 1.5 h), drive back to the lodge (1 h)

12 more trails along the Tsondab dry river and on the mountain slopes

Olive & Waterkloof Trails (fitness, surefootedness & courage required) in the neighbouring Naukluft National Park

21 km drive with your own car to the park office (park fees)

Olive Trail: in the mornings, 4.5 h

Waterkloof Trail: in the mornings, 7 h

Riding

Joy for **rider and horse**

Well-trained horses from own stud farm: also suitable for beginners

From **riding lessons** (30 min) and rides for beginners (45 min) to more demanding **rides** for advanced (in the mornings or in the evenings, 45 min to 8 h)

Please **book** all rides **in advance**, as the horses often graze in the veld
As is customary internationally, the maximum weight for riders is 90 kg



Rides, Drives & 4x4 Trails

In a nostalgic way...

... on a **carriage** through the **riparian forest** and the bush on the foot of the Naukluft Mountains. 45 min drive, max. 2 persons, booking required

Farm & Nature drive in the gameviewer 4x4, in the afternoons, 2 - 3 h

Sustainable **farming on the edge of the desert**: Drive with insight into horse keeping and nature conservation. Advance booking required.

Pleasure & adventure: **off-road trails** on farm tracks & through riverbeds

Excursions

Excursion to the **ǀNabasib school** (15 km, with your own car, 2 - 3 h): Experience against donation: Everyday life of a school & culture of Nama, Ovambo etc. Not at weekends and during holidays, pre-booking essential

Day trip to the **Sossusvlei** (353 km, with your own car): Driving around the NAUKLuFT: Via D854 & C19 to Sesriem (park gate), at noon **Sesriem Canyon**, in the afternoon Sossusvlei (less busy!), via C19 & C14 (Tsondab valley through the **NAUKLuFT**) back to the lodge



Rates 2026

Valid from 1/11/2025 until 31/10/2026. Rates include 15 % VAT and 1 % bed levy.

Please note: As it is too warm for hiking and riding, BullsPort will be **closed** from **28/11/2025** to **1/02/2026**

Lodge (rates per person, per night, incl. Dinner, Bed & Breakfast)	N\$	N\$	N\$
All rooms have WiFi, aircon & ceiling fan, small fridge, coffee station, grid power.	2 nights *	3 nights *	1 night
Rates include afternoon coffee/tea & cake and all self-guided activities in our nature reserve.			
Children: up to 5 years are free. Children 6 to 12 years pay N\$ 980 / N\$ 865 / N\$ 1,150.	p. pers./n.	p. pers./n.	p. pers./n.
Max. 2 children in a room; they have to share the room with at least 1 adult. If 1 adult shares a room with children, single room rate for adult applies.			
Luxury Double / Twin Room	2,765	2,440	3,250
Luxury Single Room	3,035	2,678	3,570
Luxury Triple Room	2,475	2,185	2,910
Family Unit (rates per room, per night, incl. Dinner, Bed & Breakfast)	p. room/n.	p. room/n.	p. room/n.
2 adults (see rate: double room) & 1 child (6 to 12 years, see rates above)	6,510	5,745	7,650
2 adults (see rate: double room) & 2 children (6 to 12 years, see rates above)	7,490	6,610	8,800
1 adult (see rate: single room) & 1 child (6 to 12 years, see rates above)	4,015	3,543	4,720
1 adult (see rate: single room) & 2 children (6 to 12 years, see rates above)	4,995	4,408	5,870
3 adults (see rate: triple room) & 1 child (6 to 12 years, see rates above)	8,405	7,420	9,880

***) Special rates** for a stay of 2 nights or 3 nights. The **amount due** has to be paid in full **30 days prior to arrival**.

Camping	N\$
The campsite is located about 3 km from the lodge in our nature reserve and has 2 pitches only. Each pitch has its own flush toilet and shower with hot water (boiler), no electricity, no mobile phone reception.	.
Rates include wood for boiler and all self-guided activities (hiking trails, 4 x 4 trail) in our nature reserve.	.
Children up to 5 years are free of charge. Camping guests are welcome to have meals at the lodge (rates below and on request) and take part in guided activities. Please book in advance, latest upon arrival at the reception. Subject to availability.	.
Pitch - for max. 4 persons (rate per adult / night)	400
Pitch - for max. 4 persons (rate per child 6 to 12 years / night)	215
Campsite - for groups up to 10 persons incl. children (rate per campsite / night)	2,100
Campsite - rate for each additional person per night (max. 16 persons)	100

Hikes & Drives (rates per person)	N\$
Network of 14 well-marked hiking trails, hiking on your own included in accommodation tariff, from 30 minutes to 7 hours, from easy to challenging, on request with guide at a fee.	.
Children up to 5 years free of charge, children 6 to 12 years pay 50%, max. 1 child can accompany 1 adult for this rate.	.
Quiver Tree Gorge Trail Tour: Scenic drive onto the Naukluft plateau, unguided hike, drive to lodge	990
Rock Arch Trail Tour: Adventurous drive in the mountains, guided hike, drive to lodge	725
Farm & Nature Drive: Sustainable horse keeping & nature conservation at the edge of the desert	615
Horse Carriage Ride (max. 2 p.): In a nostalgic way through the riparian forest and the bush	550
Day visitors: 4x4 trail (well-marked; rate p. vehicle incl. occupants; incl. in accommodation rates)	1,200
Day visitors: 14 well-marked trails, hiking on your own (incl. in accommodation rates)	300
Excursion to †Nabasib School (15 km, in your car), recommended donation to school (per person)	450

Horseback Riding - please see separate rate sheet.

Meals (pre-booking essential for guests who do not stay in the lodge)	N\$
Hearty farm cuisine (on request in advance also vegetarian, vegan or gluten-free), fresh farm produce.	.
For children up to 5 years free of charge. Rates for brunch, light lunch, lunch pack, coffee & cake on request.	.
Breakfast (rate per person, included in DBB rate)	250
Dinner (rate per person, included in DBB rate)	495

Cancellation fees:

30 - 15 days before arrival: 30 % | 14 - 8 days before arrival: 50 % | 7 - 0 days before arrival: 100 %

Horseback Riding - Rates 2026

Valid from 1/11/2025 until 31/10/2026. Rates include 15 % VAT.

Please note: As it is too warm for hiking and riding, BullsPort will be **closed** from **28/11/2025** to **1/02/2026**

For us, our **horses** are not just farm animals, but **belong to our extended family**. Each of our horses has its own character, its likes and dislikes, its own life story.

We understand **riding** as part of a mutual relationship between man and horse, based on mutual consent. We do everything to ensure that **rider and horse enjoy** their ride **equally**.

Safety and **health** for rider and horse is our top priority. Therefore, we strictly adhere to the international **maximum weight** for riders of **90 kg**.

We have high-quality **warmblood horses** that we breed and raise at BullsPort. For smaller riders, we also have cobs (smaller than 155 cm at the withers = highest point of the back between the shoulder blades).

All horses are **well** fed and **cared for**. The care includes regular hoof care by a farrier, control of internal and external parasites, vaccinations and semi-annual examinations including teeth by a specialist veterinarian for horses.

All horses have a **calm nature**, are **well trained** and are **ridden regularly**. Therefore, we can also offer (short) rides to beginners. As our horses know the terrain, they are sure-footed.

For riding we use trail saddles or English tack saddles. We provide hard hats, gloves, and mini chaps (to protect the trousers from thorns). The **wearing of hard hats is compulsory**.

All rides are **exclusive** on a first come first served basis and are limited to **four riders per guide**. All rides are **customized** and led by an experienced **riding guide**. He or she assesses the rider's level of experience, selects the **most suitable horse** for him or her and adapts the ride accordingly.

The riding activities for **children** are also based on their riding ability. The riding guide decides whether and how the child interacts with the horse.

A **horseback ride** is only possible for **children over the age of six**. It is conducted exclusively at a walk. For children between the ages of six and nine, the riding guide leads the horse beside him or her by the halter rope. Children under six can sit on the horse and pet it. They can also be led around the farmyard on the horse accompanied by a parent.

The effort for children is basically greater than for adults. We therefore ask for your understanding that we cannot grant a child allowance.

Horseback riding (rates per person ; no discounts for children)	1 p.	2 - 4 p.
Please book all rides in advance , as the horses often graze in the veld	N\$	N\$
Long Ride (best in the morning, up to 2.5 hours, incl. mineral water & snack)	1,100	900
Short Ride (up to 1.5 hours)	870	750
Mountain Zebra Trail-Ride (4 to 5 h.; incl. mineral water & picnic): hills and mountain slopes	3,800	3,000
Discover BullsPort Trail-Ride (about 7 hours; incl. brunch, snacks, juice): plains & mts.	5,000	3,800
Ride for Beginners (15 min. intro, max. 45 minutes ride): riding walk only	750	750
Riding lesson (15 min. intro, max. 30 minutes ride): in lunging circle or fenced-in arena	500	-/-
Kiddies Ride (max. 20 min., for smaller children, parent has to be present): on lead reins	350	-/-
Introduction to horses, care and handling (about 30 minutes, no ride)	-/-	350