

Travel responsibly - secure the future

Nature Reserve: Naukluft Ecosystem
Environmental concept: Top awards
Give & Take Excursion: Nabasib School

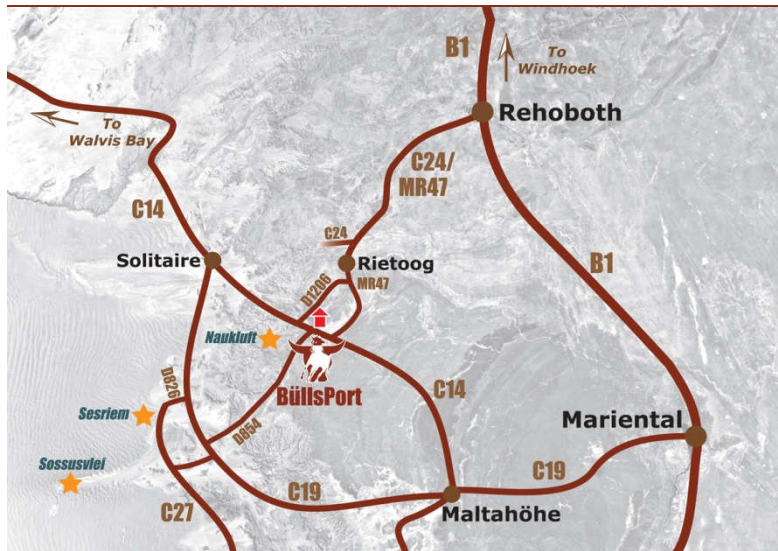


NAUKLuFT Mountains Hiking & Riding

Tel +264 63 293371
info@buelport.com
www.buelport-naukluft.com



BullsPort in a nutshell



Location

On the T-junction C 14 / D 1206
GPS S 24° 08.931' E 16° 21.773'
230 km to Windhoek
280 km to Walvis Bay
110 km to Sesriem/Sossusvlei

Accessible with a sedan, but SUVs and 4x4s are more comfortable and advantageous in Namibia
An ideal stopover, also at the **beginning** or **end** of your tour through Namibia
Mountains of the NAUKLuFT with springs as a **charming contrast** to the dune sea of the Namib
If you are coming from South Africa, this is the **ideal stopover** on the way to the Namibian coast

Lodge

family-friendly

accessible for impaired (restaurant / lounge and 6 of the rooms)

environmentally aware: top mark of the eco seal EcoAwards Namibia
socially responsible: Naukluft Foundation supports Nabasib School

12 spacious rooms (on average 45 m²):

10 double rooms (twin beds) and 2 family suites (twin beds)

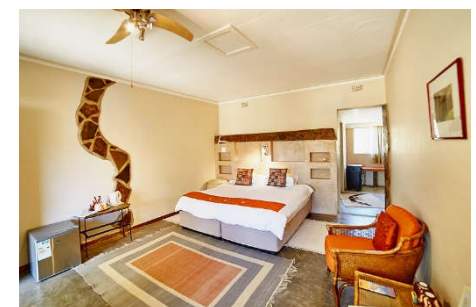
Each room has a **bathroom**, a **separate toilet** and a small **veranda**,
air conditioner, ceiling fan, fly screens on the door and windows,
fridge, coffee station and hair dryer

Restaurant, lounge, terrace, bar, **swimming pool**
good, free WiFi in rooms and lounge, limited mobile phone reception

Hearty farm cuisine (vegetarian on request), fresh farm produce

Check-in from 2 p.m., check-out by 10 a.m.

The lodge is closed annually from 15 December until 15 January



Camping

2 Campsites in the nature reserve (3 km to the lodge) with 2 pitches each
max. 4 persons per pitch or 10 persons per campsite

Camping box & gate key at check-in at lodge reception

each pitch has its **own (hot) shower/WC**, barbecue facilities and sink
Shade under trees, no power point, no mobile reception

Brunch 10 a.m. - 12 a.m. & further meals on request at the lodge

Arrival 2 p.m. - 5 p.m., departure by 10 a.m.

Nature

Naukluft Mountains – 43 km² private nature reserve

Fascinating **geology**

Perennial springs, **creeks** & water kolks

About **50 species of mammals**, incl. the near endemic **mountain zebra**

Diverse **birdlife** (more than 200 species)

Unique **flora** incl. resurrection bush, Bushman's candle, **quiver tree** and sycamore



Hiking

Widespread **network** of 14 well-marked hiking trails, from 30 min. to 7 hours, from easy to challenging, to explore **on your own**, on request also possible with a guide

Quiver Tree Gorge Trail (fitness and surefootedness required)

F.o.c.: in the mornings, up to the plateau, back through the gorge (7 h)

Tour: in the mornings, scenic drive in game viewer up to plateau (1.5 h),

unguided hike through the gorge (3 h), drive back to lodge (30 min)

Option: Nature drive to the plateau and lower gorge (5 h)

Rock arch (Bogenfels) Trail (fitness and surefootedness required)

Tour: in the afternoons, drive in the game viewer (1 h), hike to the rock arch (Bogenfels of the NAUKLuFT; 1.5 h), drive back to the lodge (1 h)

12 more trails along the Tsondab dry river and on the mountain slopes

Olive & Waterkloof Trails (fitness, surefootedness & courage required) in the neighbouring Naukluft National Park

21 km drive with your own car to the park office (park fees)

Olive Trail: in the mornings, 4.5 h

Waterkloof Trail: in the mornings, 7 h

Riding

Joy for **rider and horse**

Well-trained horses from own stud farm: also suitable for beginners

From **riding lessons** (30 min) and rides for beginners (45 min)

to more demanding **rides** for advanced

(in the mornings or in the evenings, 45 min to 8 h)

Please **book** all rides **in advance**, as the horses often graze in the veld

As is customary internationally, the maximum weight for riders is 90 kg



Rides, Drives & 4x4 Trails

In a nostalgic way...

... on a **carriage** through the **riparian forest** and the bush on the foot of the Naukluft Mountains. 45 min drive, max. 4 persons, booking required

Nature drive in the gameviewer vehicle. In the afternoons, 2 - 3 h.

Sustainable **farming on the edge of the desert**: Farm drive with insight into sheep breeding and horse keeping. Advance booking required.

Pleasure & adventure: **off-road trails** on farm tracks & through riverbeds

Excursions

Excursion to the **Nabisib school** (2x 15 km, with your own car, 2 - 3 h):

Experience against donation: Everyday life of a school & culture of the Nama. Not at weekends and during holidays, appointment necessary

Day trip to the **Sossusvlei** (353 km, with your own car):

Driving around the NAUKLuFT: Via D854 & C19 to Sesriem (park gate),

at noon **Sesriem Canyon**, in the afternoon Sossusvlei (less busy!),

via C19 & C14 (Tsondab valley through the **NAUKLuFT**) back to the lodge



Rates 2023

Valid from 1/11/2022 until 31/10/2023. Rates include 15 % VAT and 1 % bed levy.

Lodge (rates per person, per night, DBB)	Adult N\$		Child (6-12) N\$
	2 nights	1 night	per night
Luxury Double Room	2,065	2,430	995
Luxury Single Room	2,320	2,730	995
Luxury Triple Room	1,860	2,190	995

The rates include dinner, bed & breakfast (DBB) as well as coffee & cake in the afternoons.

Child tariffs apply to children, who share a room with full-paying adults. Children up to 5 years are free of charge.

A maximum of two children can share a room with one or two adults. If only 1 adult is sharing a room with a child, we charge the rate for a single room.

Campsite	N\$	Child (6-12) N\$
Pitch (campsite has 2 pitches) for a maximum of 4 persons (rate per person / night)	305	160
Campsite for groups up to 10 persons incl. children (rate per campsite / night)	1,950	-/-
Campsite - rate for each additional person per night (max. 16 persons)	75	75

Children up to 5 years are free of charge.

Camping guests are welcome to have breakfast and dinner at the lodge (rates on request) and take part in activities. Please book in advance, latest upon arrival at the reception. Subject to availability.

Meals	N\$	Child (6-12) N\$
Breakfast (rates per person, included in DBB rate)	195	115
Dinner (rates per person, included in DBB rate)	395	220

For children up to 5 years free of charge. Rates for brunch, light lunch, lunch pack, coffee & cake on request.

Hikes & Drives (rates per person):	N\$	Child (6-12) N\$
14 hiking trails: Hiking on your own on well-marked trails	0	0
Quiver Tree Gorge Trail (as tour): Scenic drive onto plateau, unguided hike, drive to lodge	750	375
Rock Arch Trail (as tour): Adventurous drive in the mountains, guided hike, drive to lodge	550	275
Farm Drive: Sheep breeding, horse keeping & nature conservation	460	230
Horse Carriage Ride (min: 2 p., max: 4 p.; 3rd and 4th p. pay N\$ 200 each)	400	200
4x4 trails (well-marked; rate per vehicle)	950	-/-
Excursion to Nabasib School (15 km, in your car) N\$ 300 pp donation to school appreciated	-/-	-/-
Day entrance to make use of hiking trails (for guests not staying at BullsPort)	180	90

Horseback Safari Rides (rates per person; no discounts for children):	1 p. N\$	as from 2 p. N\$
Sunrise Ride (up to 2.5 hours)	980	890
Afternoon Ride (up to 1.5 hours)	680	650
NAUKLuFT Safari (4 to 5 hours; incl. refreshments): Mountain Zebra Trail	3,500	3,000
BullsPort Discovery Ride (about 8 hours; incl. lunch & coffee break): plains & mountains	4,800	3,800
Horse Ride for Beginners (15 min. intro, max. 45 min. ride): riding walk only	650	650
Riding lesson (about 30 minutes): in lunging circle or fenced-in arena	450	-/-
Pony ride (max. 20 minutes, for children): lead on a halter on a short walk	300	-/-
Introduction (about 30 minutes; no ride): horses, horse keeping and handling	300	200

All rides are exclusive on first come first served basis. Riding activities for children subject to their level of riding ability. The maximum weight per rider is 90 kg. Please **book** all rides **in advance**, as the horses often graze in the veld.

Cancellation fees:

30 - 15 days before arrival	30 %
14 - 8 days before arrival	50 %
7 - 1 days before arrival & no-show	100 %

No cancellation fee will be charged for cancellations due to unexpected travel restrictions or a corona infection (medical certificate required). A free rebooking is also possible.