

## Travel responsibly - secure the future

Nature Reserve: Naukluft Ecosystem  
Environmental concept: Top awards  
Give & Take Excursion: Nabasib School

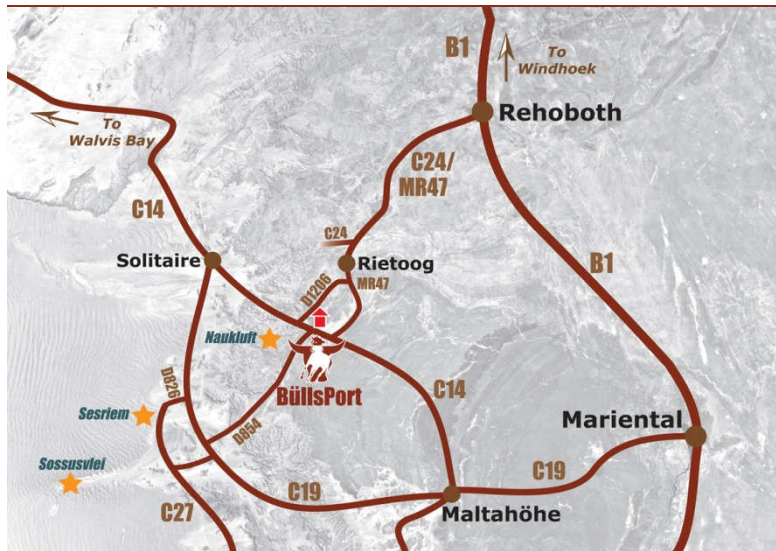


NAUKLuFT Mountains Hiking & Riding

Tel +264 63 293371  
info@buelport.com  
www.buelport-naukluft.com



## BullsPort in a nutshell



### Location

On the T-junction C 14 / D 1206  
GPS S 24° 08.931' E 16° 21.773'  
**230 km** to Windhoek  
**280 km** to Walvis Bay  
**110 km** to Sesriem/Sossusvlei

Accessible with a sedan, but SUVs and 4x4s are more comfortable and advantageous in Namibia  
An ideal stopover, also at the **beginning** or **end** of your tour through Namibia  
Mountains of the NAUKLuFT with springs as a **charming contrast** to the dune sea of the Namib  
If you are coming from South Africa, this is the **ideal stopover** on the way to the Namibian coast

## Lodge

### family-friendly

**accessible for impaired** (restaurant / lounge and 6 of the rooms)

**environmentally aware:** top mark of the eco seal EcoAwards Namibia  
**socially responsible:** Naukluft Foundation supports Nabasib School

**12 spacious rooms** (on average 45 m<sup>2</sup>):

10 double rooms (twin beds) and 2 family suites (twin beds)

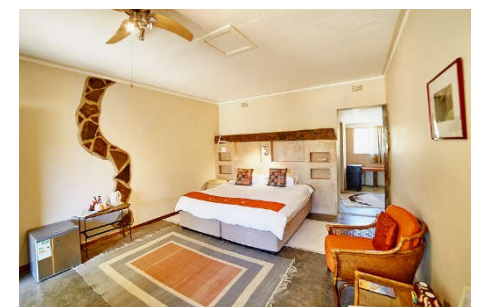
Each room has a **bathroom**, a **separate toilet** and a small **veranda**,  
**air conditioner**, ceiling fan, fly screens on the door and windows,  
**fridge**, coffee station and hair dryer

Restaurant, lounge, terrace, bar, **swimming pool**  
**good, free WiFi** in rooms and lounge, limited mobile phone reception

**Hearty farm cuisine** (vegetarian on request), fresh farm produce

Check-in from 2 p.m., check-out by 10 a.m.

The lodge is closed annually from 15 December until 15 January



## Camping

2 Campsites in the nature reserve (3 km to the lodge) with 2 pitches each max. 4 persons per pitch or 10 persons per campsite

Camping box & gate key at check-in at lodge reception

each pitch has its **own (hot) shower/WC**, barbecue facilities and sink  
**Shade** under trees, no power point, no mobile reception

**Brunch** 10 a.m. - 12 a.m. & further meals on request at the lodge

Arrival 2 p.m. - 5 p.m., departure by 10 a.m.



## Nature

**Naukluft Mountains** – **43 km<sup>2</sup>** private nature reserve

Fascinating **geology**

Perennial springs, **creeks** & water kolks

About **50 species of mammals**, incl. the near endemic **mountain zebra**

Diverse **birdlife** (more than 200 species)

Unique **flora** incl. resurrection bush, Bushman's candle, **quiver tree** and sycamore



## Hiking

Widespread **network** of 14 well-marked hiking trails, from 30 min. to 7 hours, from easy to challenging, to explore **on your own**, on request also possible with a guide

**Quiver Tree Gorge Trail** (fitness and surefootedness required)

F.o.c.: in the mornings, up to the plateau, back through the gorge (7 h)

Tour: in the mornings, scenic drive in game viewer up to plateau (1.5 h),

unguided hike through the gorge (3 h), drive back to lodge (30 min)

Option: Nature drive to the plateau and lower gorge (5 h)

**Rock arch (Bogenfels) Trail** (fitness and surefootedness required)

Tour: in the afternoons, drive in the game viewer (1 h), hike to the rock arch (Bogenfels of the NAUKLuFT; 1.5 h), drive back to the lodge (1 h)

**12 more trails** along the Tsondab dry river and on the mountain slopes

**Olive & Waterkloof Trails** (fitness, surefootedness & courage required) in the neighbouring Naukluft National Park

21 km drive with your own car to the park office (park fees)

Olive Trail: in the mornings, 4.5 h

Waterkloof Trail: in the mornings, 7 h

## Riding

Joy for **rider and horse**

**Well-trained horses** from own stud farm: also suitable for beginners

From **riding lessons** (30 min) and rides for beginners (45 min)

to more demanding **rides** for advanced

(in the mornings or in the evenings, 45 min to 8 h)

Please **book** all rides **in advance**, as the horses often graze in the veld

As is customary internationally, the maximum weight for riders is 90 kg



## Rides, Drives & 4x4 Trails

In a nostalgic way...

... on a **carriage** through the **riparian forest** and the bush on the foot of the Naukluft Mountains. 45 min drive, max. 4 persons, booking required

Learning what it means to **farm on the edge of the desert** – on a **farm drive** in a game viewer, getting an insight in **sheep breeding** and **horse keeping**. In the afternoons, 2 - 3 h

Pleasure & adventure: **off-road trails** on farm tracks & through riverbeds

## Excursions

Excursion to the **Nabisib school** (2x 15 km, with your own car, 2 - 3 h):

Experience against donation: Everyday life of a school & culture of the Nama. Not at weekends and during holidays, appointment necessary

Day trip to the **Sossusvlei** (353 km, with your own car):

Driving around the NAUKLuFT: Via D854 & C19 to Sesriem (park gate),

at noon **Sesriem Canyon**, in the afternoon Sossusvlei (less busy!),

via C19 & C14 (Tsondab valley through the **NAUKLuFT**) back to the lodge



## Rates 2022

Valid from 1/11/2021 until 31/10/2022. Rates include 15 % VAT and 1 % bed levy.  
 Dinner, bed & breakfast (DBB) as well as coffee & cake in the afternoons are included.

<b>Lodge</b>	<b>N\$</b>	<b>Child 6-12 y. N\$</b>
Luxury Double Room (rates per person, DBB)	2,310	995
Luxury Single Room (rates per person, DBB)	2,590	995
Luxury Triple Room (rates per person, DBB)	2,110	995

Child tariffs apply to children, who share a room with full-paying adults. Children up to 5 years are free of charge.  
 A maximum of two children can share a room with one or two adults. If only 1 adult is sharing a room with a child we charge the rate for a single room.

<b>Campsite</b>	<b>N\$</b>	<b>Child 6-12 y. N\$</b>
Pitch for a maximum of 4 persons on the communal campsite (rate per person)	305	150
Exclusive campsite for a maximum of 10 persons (rate for the campsite)	1,950	

Children up to 5 years are free of charge.

Camping guests are welcome to have breakfast and dinner at the lodge (rates on request) and take part in activities.  
 Subject to availability. Please book in advance, latest upon arrival at the reception.

<b>Meals</b>	<b>N\$</b>	<b>Child 6-12 y. N\$</b>
Breakfast (rates per person, included in DBB rate)	195	95
Dinner (rates per person, included in DBB rate)	395	195

For children up to 5 years free of charge. Rates for brunch, light lunch, lunch pack, coffee & cake on request.

<b>Hikes &amp; Drives</b> (rates per person):	<b>N\$</b>	<b>Child 6-12 y. N\$</b>
14 hiking trails – hiking on your own on well-marked trails	0	0
Quiver Tree Gorge Trail as tour: scenic drive onto plateau, unguided hike, drive to lodge	720	360
Rock Arch Trail as guided hike, incl. drive in 4x4 to the starting point	480	240
Farm Drive (farm operation & nature)	440	220
Horse Carriage Ride (min: 2 p., max: 4 p.; 3rd and 4th p. pay N\$ 180 each)	360	180
Day entrance (for guests not staying at BullsPort)	180	90
Half-Day entrance (for guests not staying at BullsPort)	100	50

Rates for 4x4 Trails and for excursions to Nabisib School on request.

<b>Horse Riding</b> (rates per person; no discounts for children):	<b>1 p. N\$</b>	<b>as from 2 p. N\$</b>
Pony (for children; to lead on a halter on a short hike)	350	-/-
Riding lessons (in lunging circle or fenced-in area) – about 30 minutes	400	-/-
Horse Ride for Beginners (riding walk only) – about 45 minutes	600	600
Evening Ride – up to 1.5 hours	630	600
Sunrise Ride – up to 2.5 hours	920	780
BullsPort Discovery Ride (incl. lunch & coffee break) – about 8 hours	4,200	3,600
Naukluft Safari (Mountain Zebra Trail; incl. refreshments) – 4 to 5 hours	3,300	2,900

Please **book** all rides **in advance**, as the horses often graze in the veld.

Kindly note: The maximum weight per rider is 90 kg.

### Cancellation fees:

30 - 15 days before arrival	30 %
14 - 8 days before arrival	50 %
7 - 1 days before arrival & no-show	100 %

No cancellation fee is due for cancellations due to unexpected travel restrictions or a corona infection (medical certificate required). A free rebooking is also possible.